



## CASE STUDY

**Introducing a powered stand assist into  
a Residential Care setting**



Safe  
Patient  
Handling

## The current situation

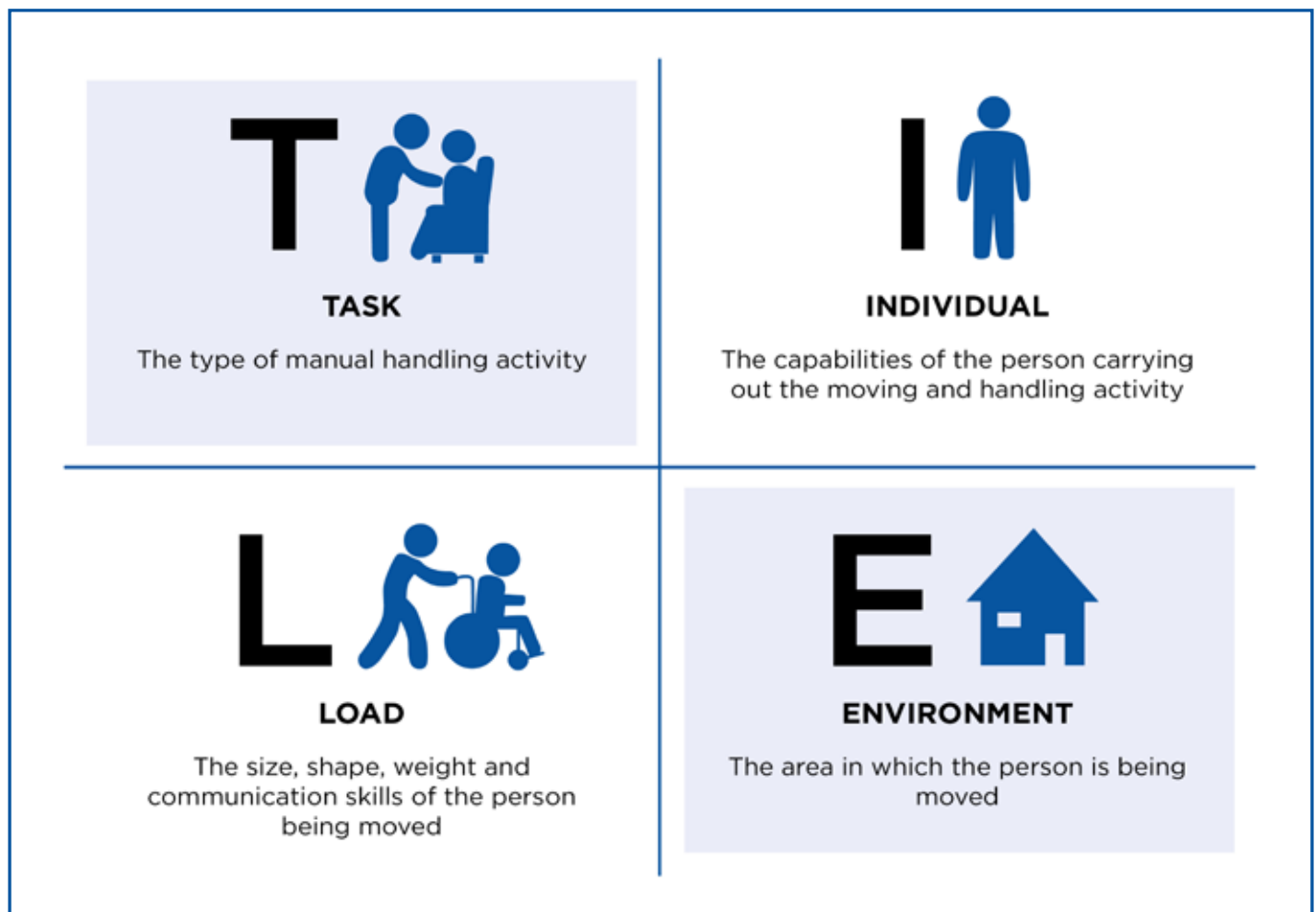
The Roses Care Home\* is experiencing more and more residents that struggle to transfer from a chair (or seated to seated position) with the support of a carer. The residents, however are still able to maintain their weight bearing and transfer with the assistance of a mechanical device. On the advice of a Community Health Professional (Occupational Therapist (OT)/ Physiotherapist (PT)), the Care Home Manager looks to purchase a powered stand assist. The home would like to safely maintain the residents they currently have

and cater for future residents with the same needs.

The home is also driven by the need to provide their staff with safe systems of work, reducing the risk of injury. Often people in the stages of starting to go off their feet and moving toward full body hoisting can be difficult to handle. This type of resident often doesn't realise how much strain they are placing on carers, potentially leading to injury of the handler and or the resident themselves.

## Assessment method

The home uses a **Task, Individual, Load, Environment** (TILE) structured approach to help guide them in establishing what they need.



## Assessment of the Environment

First the Care Home looked at the **Environment** to ensure that their rooms would have enough space or if furniture needed to be moved to accommodate the use of a powered stand assist aid. This was included as part of the home's generic risk assessment.

As the residents rooms are already able to accommodate a mobile hoist, they concluded that there is sufficient room. As a precaution the Care Home Manager calls in a manufacturer's representative to provide information to add to the risk assessment.



---

## Individual

In considering the staff (**Individuals**), moving and handling training is also highlighted as a need as part of their generic risk assessment, ensuring staff are trained in the use of a powered stand assist, as part of a safe system of work.

The home also look at the equipment's compatibility with pieces of furniture such as armchairs, tables, beds to ascertain if the powered stand assist will be able to get close enough to furniture to be able to support its residents.

## Load

The home considers the **Load**, this being their residents, the question is raised regarding when they should move someone on to a powered stand assist aid. The home decides to refer to Community Services such as an OT or PT for assessment in such instances for an individual assessment. This is to ensure that each resident can maximise their functional ability

before progressing toward use of a powered stand assist aid. Also, the assessment documents are reviewed regularly by their Moving and Handling Assessor to ensure that they are still capable of using the equipment safely. These reviews are documented in the resident's individual handling plan and risk assessment.

---

## The solution

The care home complete their risk assessments guided by a **TILE** approach and decide to purchase a powered stand assist aid. They also check all their staff have up to date moving and handling training and have a special session on how to use their particular powered stand assist aid from the manufacturer's representative. The home also implements a protocol that residents are referred in to community therapy services for assessment to establish if anything can be done to keep them on their feet without mechanised stand aids, and will also document risk assessments and handling plans as well as complete regular reviews of those using a powered stand assist aid.

This Case Study is provided as an example of a scenario and possible solutions and is intended for guidance only. A full and thorough risk assessment must be carried out by a trained professional before implementing a care and/or equipment package.

\*Fictional name